

How to use ESB's new Circontrol Raption electric vehicle fast charger



This charger includes the following connector types: DC CHAdeMO, CCS and 22 kW AC. Our normal fast charger pricing applies for the use of the DC CHAdeMO and CCS connectors, however there is no cost to use the 22kW AC connector at present.

1. The screen displays the following when it is on standby. The screen enters standby state when there is no interaction performed on the screen for approximately 2 minutes.



Figure 1. Idle screen

2. Touch or tap your ESB charge point access card to activate the screen and continue to perform actions as required. Once the screen is awake, it will be shown as Figure 2.

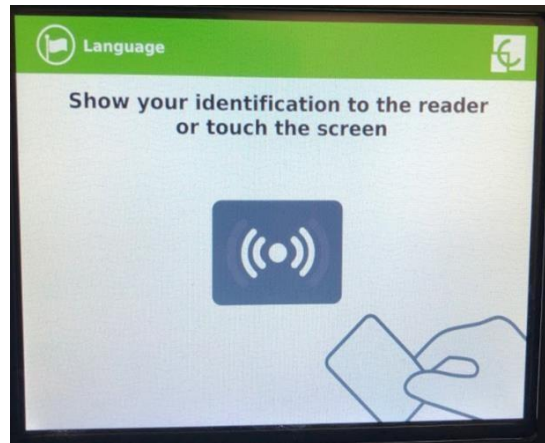


Figure 2. Initiation screen

3. To start your charge, touch the initiation screen again and it will display the connector selection screen (shown below).

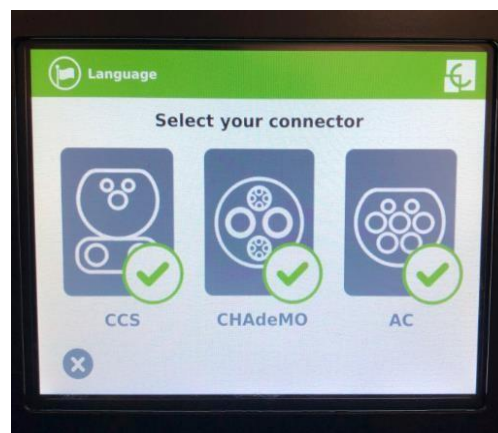


Figure 3. Connector selection screen

After selecting the connector of your choice, it will display a ready screen as shown in figure 4. This requires authentication to start the charge.

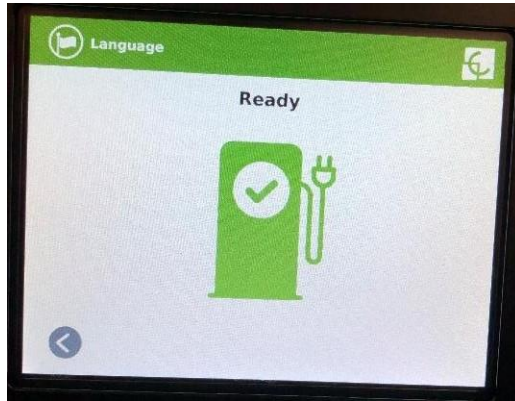


Figure 4. Ready screen

Now, present your card onto the card reader below the screen to authorize the transaction.

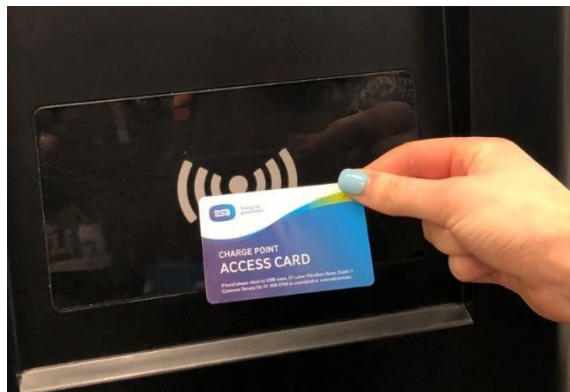


Figure 5. Present card

Once authorising the screen will appear as the below:

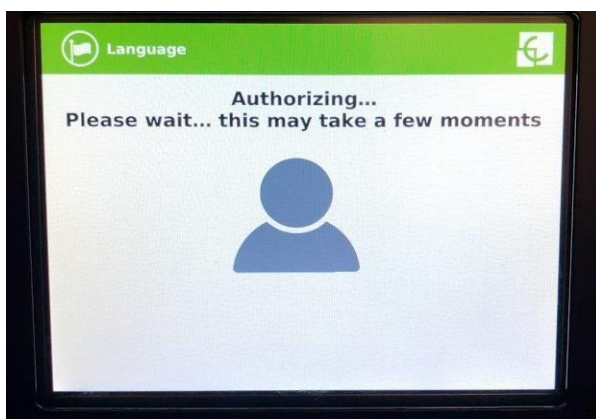


Figure 5. Authorizing screen

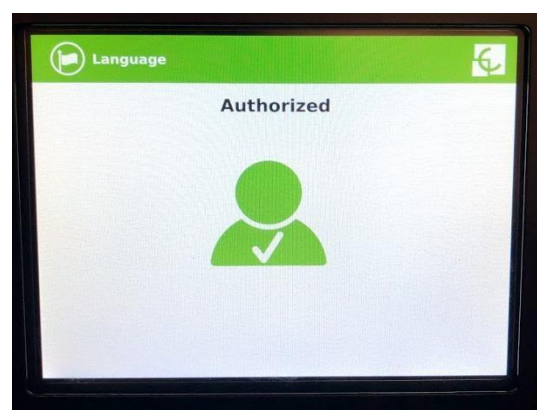


Figure 6. Authorized screen

- Once authorized and connector is selected, make sure the connector lock LED (a small red beacon on the connector holder) is turned off. This is for CHAdeMO and CCS only. (shown below).



Figure 8. Connectors locked



Figure 7. CHAdeMO Connector unlocked

Pro tip 1: To release the CCS connector, push the connector upwards a bit and then slide out.

Pro tip 2: For CHAdeMO, firmly push the release button forward until it covers the “OK” wording completely. The connector will slide off the charger with ease. Shown in figures below.

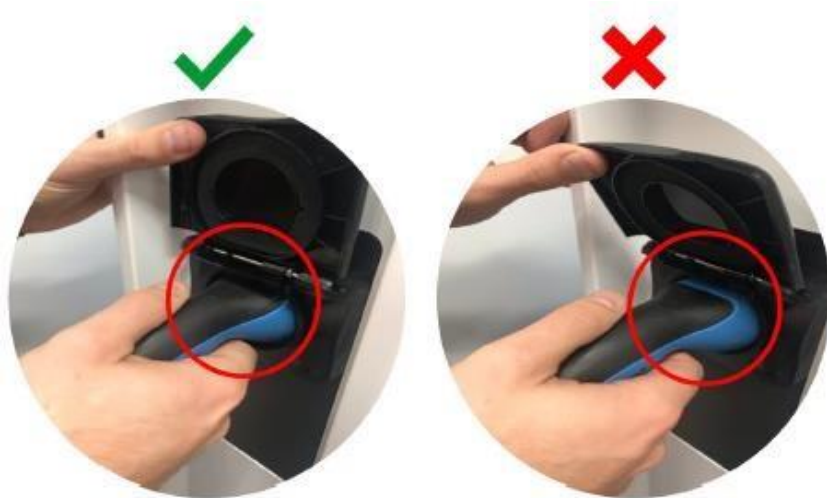


Figure 10. Correct

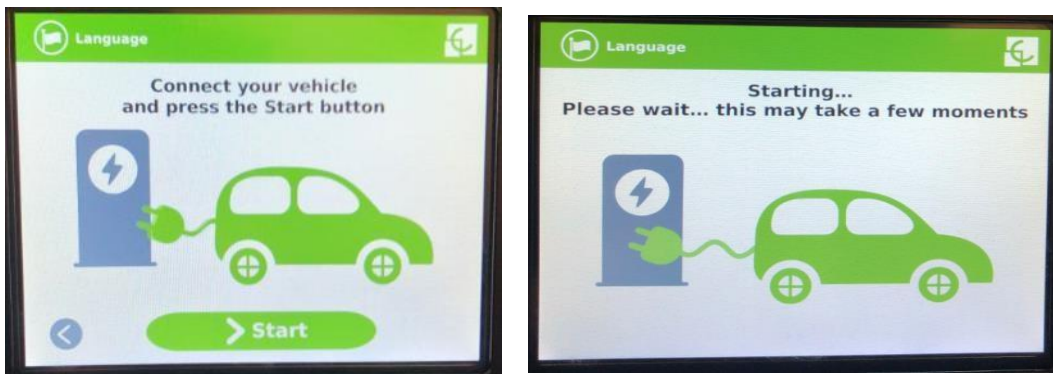


Figure 9 Incorrect

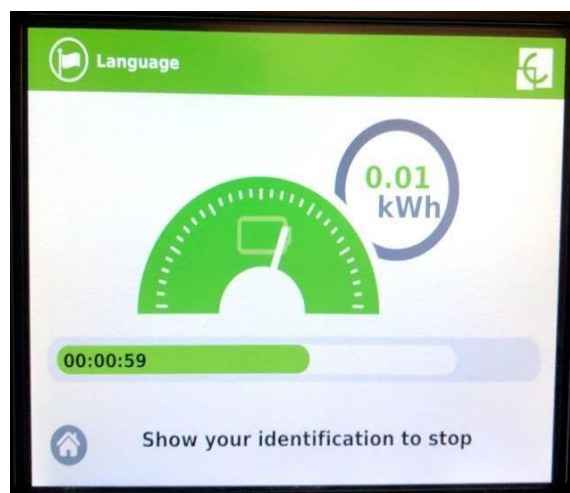
Pro tip 3: For AC, ensure the connector is firmly pushed into the charger. If not, the charging will not start.



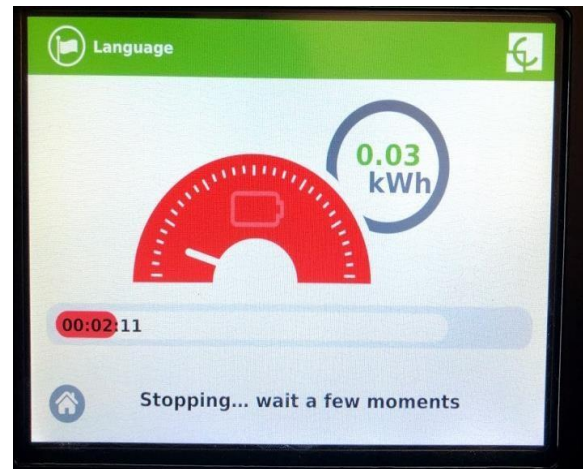
5. Plug in the connector to your car and press the start button on the screen to start charging.



6. The screen will display the charging activity with time and power consumed.



7. To stop the charge, present your card to authorize and then click the stop button on screen.



8. After the charging is stopped, it will display a charge summary of your transaction on the screen.



9. Press exit to finish your charging session.

Please note, drivers can also start and stop a charge using the ecar connect app which is free to download from the Apple or Google Play store.