

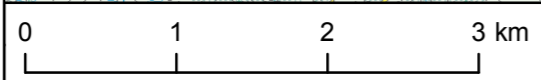
Legend

- Toon sub-catchment (Water Framework Directive)

Subsoils

- A - Alluvium undifferentiated gravelly
- BktPt - Blanket peat
- GDSs - Sandstone sands and gravels Devonian"
- Made ground
- Rck - Bedrock at surface
- TDSs - Sandstone till Devonian
- Water

Copyright Teagasc
 Copyright Environmental Protection Agency
 Ordnance Survey Licence No. EN 0023715-19
 Copyright Ordnance Survey Ireland
 Government of Ireland



Rev	Revision Description	Date

COPYRIGHT © ESI ENGINEERING & FACILITY MANAGEMENT LTD.
 All rights reserved. No part of this work may be modified or reproduced or copied in any form or by any means - graphics, electronic or mechanical, including photocopying, recording, taping or information-and-retrieval system, or used for any purpose than its designated purpose, without the written permission of ESI Engineering & Facility Management Ltd.

ESB International, Stephen Court, 18-21 St. Stephen's Green, Dublin 2, Ireland Tel: +353 (0) 1 703 8000 Fax: +353 (0) 1 703 8088
 Email: marketing@esbi.ie Web: www.esbi.ie

ESB International, is a trading name of ESI Engineering and Facility Management Ltd.
 Registered Office: as above, Registered in Ireland: No. 155249

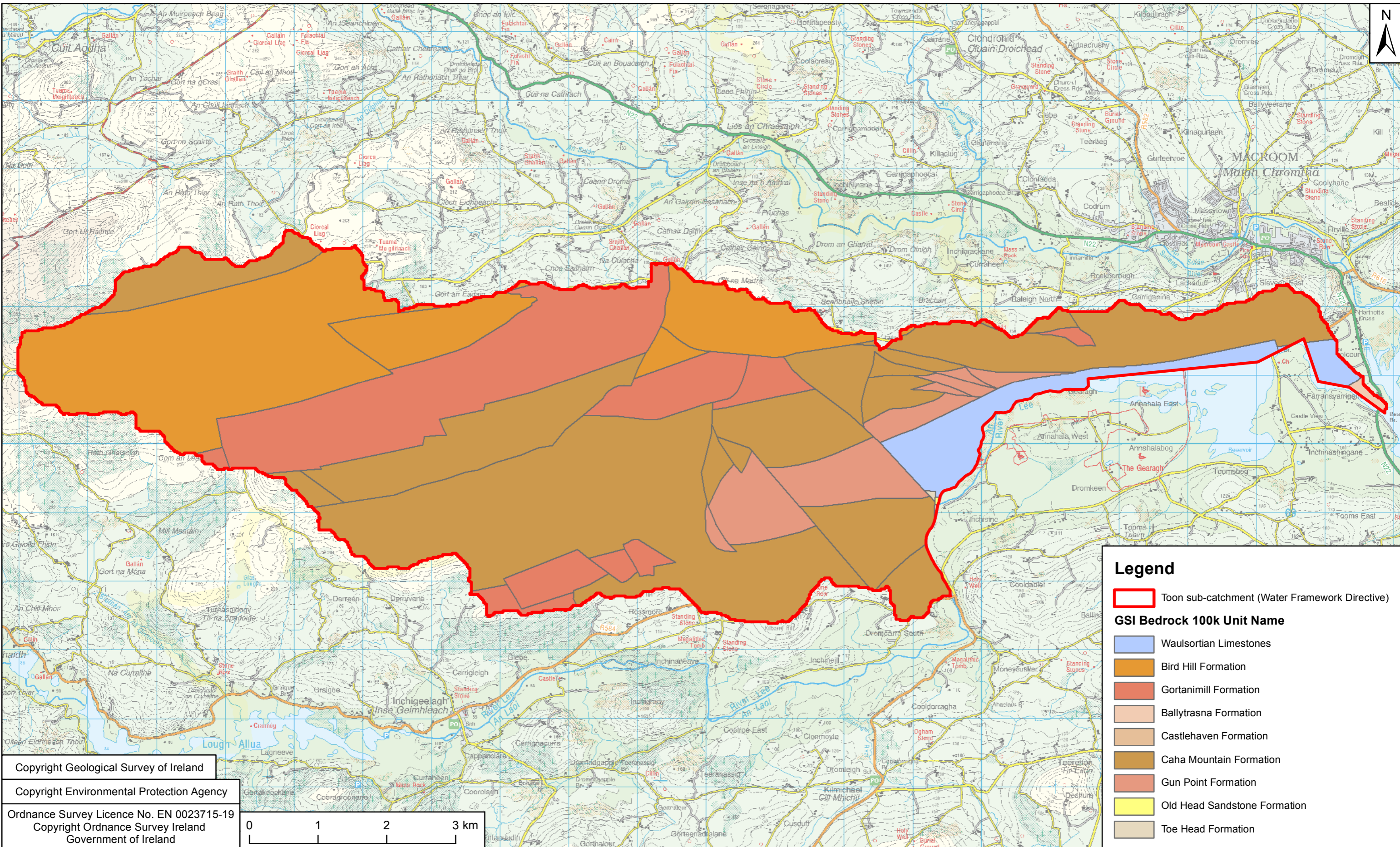
Client
ESB Generation and Wholesale Markets

Project
Gearagh Scoping Exercise

Title
Toon sub-catchment - Subsoils

Production Unit
Civil & Environmental Engineering

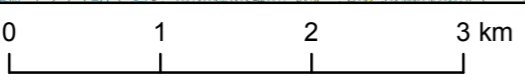
DRAWN BY T. O'Rourke	PRODUCED BY T. O'Rourke	VERIFIED BY G. Hamilton	APPROVED BY J. Fitzpatrick	REVISION 0	APPROVED DATE 11/11/2016
CLIENT REF. 00-00	NO. OF SHEETS 1/1	SHEET SIZE A3	SCALE 1:50,000		
MAP REFERENCE QS-000223-01-019					



Legend

- Toon sub-catchment (Water Framework Directive)
- GSI Bedrock 100k Unit Name**
- Waulsortian Limestones
- Bird Hill Formation
- Gortanimill Formation
- Ballytrasna Formation
- Castlehaven Formation
- Caha Mountain Formation
- Gun Point Formation
- Old Head Sandstone Formation
- Toe Head Formation

Copyright Geological Survey of Ireland
 Copyright Environmental Protection Agency
 Ordnance Survey Licence No. EN 0023715-19
 Copyright Ordnance Survey Ireland
 Government of Ireland



Rev	Revision Description	Date

ESB INTERNATIONAL

ESB International, Stephen Court, 18-21 St. Stephen's Green,
 Dublin 2, Ireland Tel: +353 (0) 1 703 8000 Fax: +353 (0) 1 703 8088
 Email: marketing@esbi.ie Web: www.esbi.ie

ESB International, is a trading name of ESB Engineering and Facility Management Ltd.
 Registered Office: as above, Registered in Ireland: No. 155249

Client
ESB Generation and Wholesale Markets

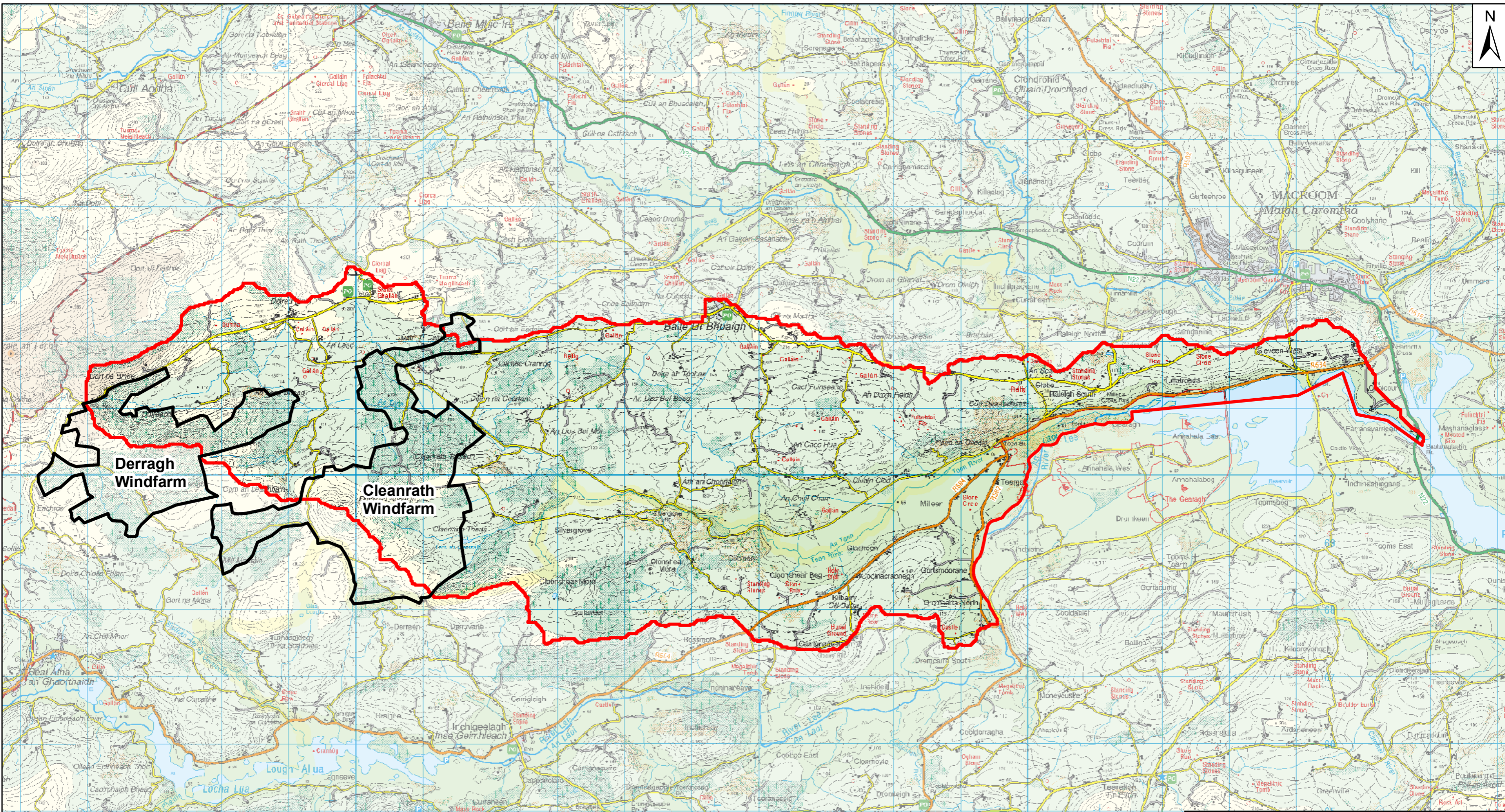
Project
Gearagh Scoping Exercise

Title
Toon sub-catchment - Bedrock

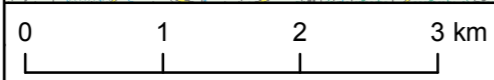
Production Unit
Civil & Environmental Engineering

DRAWN BY T. O'Rourke	PRODUCED BY T. O'Rourke	VERIFIED BY G. Hamilton	APPROVED BY J. Fitzpatrick	REVISION 0	APPROVED DATE 11/11/2016
CLIENT REF. 00-00	NO. OF SHEETS 1/1	SHEET SIZE A3	SCALE 1:50,000	MAP REFERENCE QS-000223-01-020	

COPYRIGHT © ESB ENGINEERING & FACILITY MANAGEMENT LTD.
 All rights reserved. No part of this work may be modified or reproduced or copied in any form or by any means - graphics, electronic or mechanical, including photocopying, recording, taping or information-and-retrieval system, or used for any purpose than its designated purpose, without the written permission of ESB Engineering & Facility Management Ltd.



Copyright Environmental Protection Agency
 Ordnance Survey Licence No. EN 0023715-19
 Copyright Ordnance Survey Ireland
 Government of Ireland



Legend

- Toon sub-catchment (Water Framework Directive)
- Upstream Windfarm Locations

Rev	Revision Description	Date

ESB INTERNATIONAL
 ESB International, Stephen Court, 18-21 St. Stephen's Green,
 Dublin 2, Ireland Tel: +353 (0) 1 703 8000 Fax: +353 (0) 1 703 8088
 Email: marketing@esbi.ie Web: www.esbi.ie

Client
ESB Generation and Wholesale Markets

Title
**Upstream Windfarm Locations
 Toon sub-catchment**

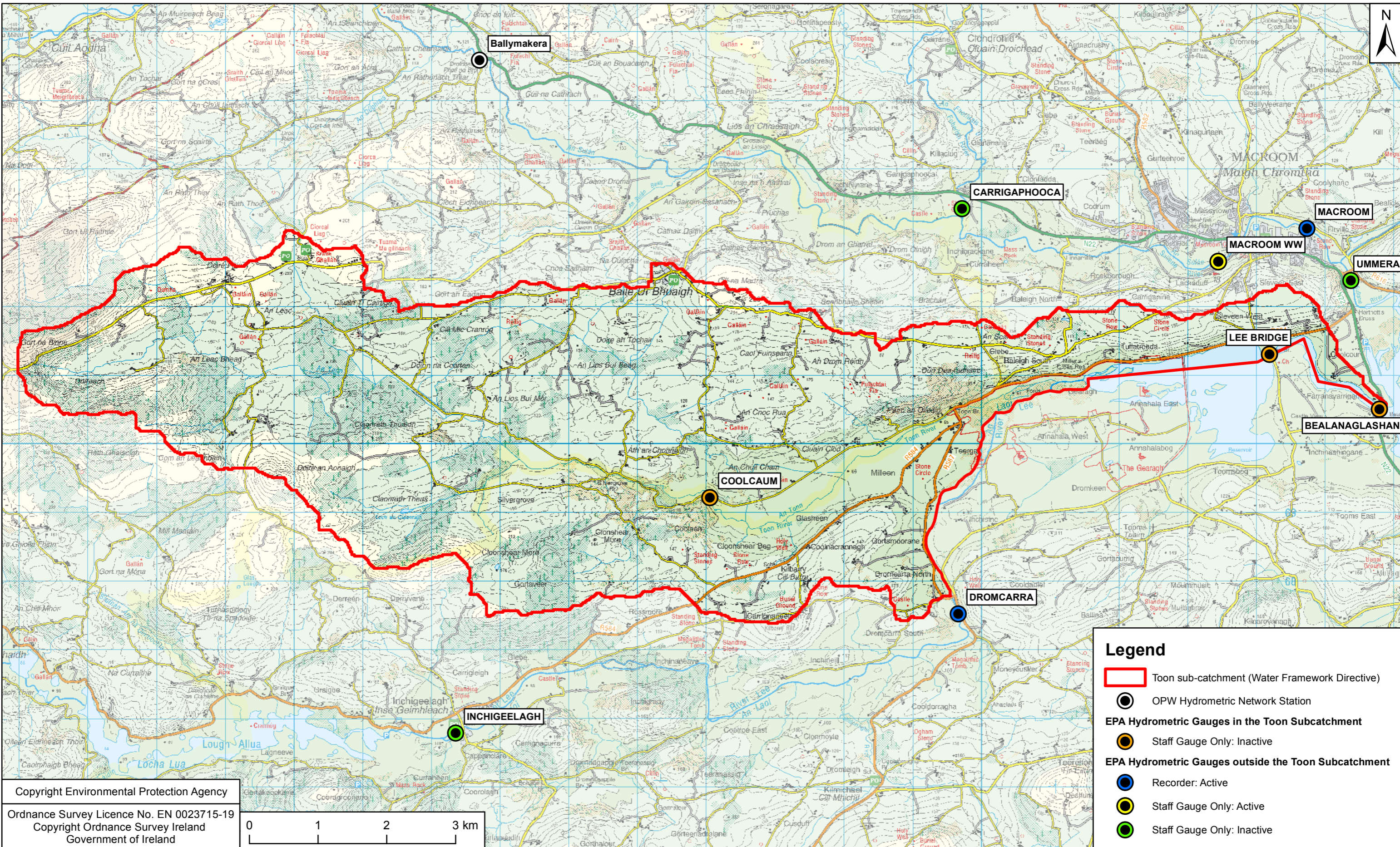
COPYRIGHT © ESBI ENGINEERING & FACILITY MANAGEMENT LTD.
 All rights reserved. No part of this work may be modified or reproduced or copied in any form or by any means - graphics, electronic or mechanical, including photocopying, recording, taping or information-and-retrieval system, or used for any purpose than its designated purpose, without the written permission of ESBI Engineering & Facility Management Ltd.

ESB International, is a trading name of ESBI Engineering and Facility Management Ltd.
 Registered Office: as above, Registered in Ireland: No. 155249

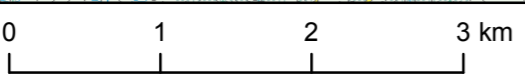
Project
Gearagh Scoping Exercise

Production Unit
Civil & Environmental Engineering

DRAWN BY T. O'Rourke	PRODUCED BY T. O'Rourke	VERIFIED BY G. Hamilton	APPROVED BY J. Fitzpatrick	REVISION 0	APPROVED DATE 11/11/2016
CLIENT REF. 00-00	NO. OF SHEETS 1/1	SHEET SIZE A3	SCALE 1:55,000		
MAP REFERENCE QS-000223-01-021					



Copyright Environmental Protection Agency
 Ordnance Survey Licence No. EN 0023715-19
 Copyright Ordnance Survey Ireland
 Government of Ireland



Legend

- Toon sub-catchment (Water Framework Directive)
- OPW Hydrometric Network Station
- EPA Hydrometric Gauges in the Toon Subcatchment**
- Staff Gauge Only: Inactive
- EPA Hydrometric Gauges outside the Toon Subcatchment**
- Recorder: Active
- Staff Gauge Only: Active
- Staff Gauge Only: Inactive

Rev	Revision Description	Date

ESB INTERNATIONAL
 ESB International, Stephen Court, 18-21 St. Stephen's Green,
 Dublin 2, Ireland Tel: +353 (0) 1 703 8000 Fax: +353 (0) 1 703 8088
 Email: marketing@esbi.ie Web: www.esbi.ie

ESB International, is a trading name of ESB Engineering and Facility Management Ltd.
 Registered Office: as above, Registered in Ireland: No. 155249

Client
 ESB Generation and Wholesale Markets

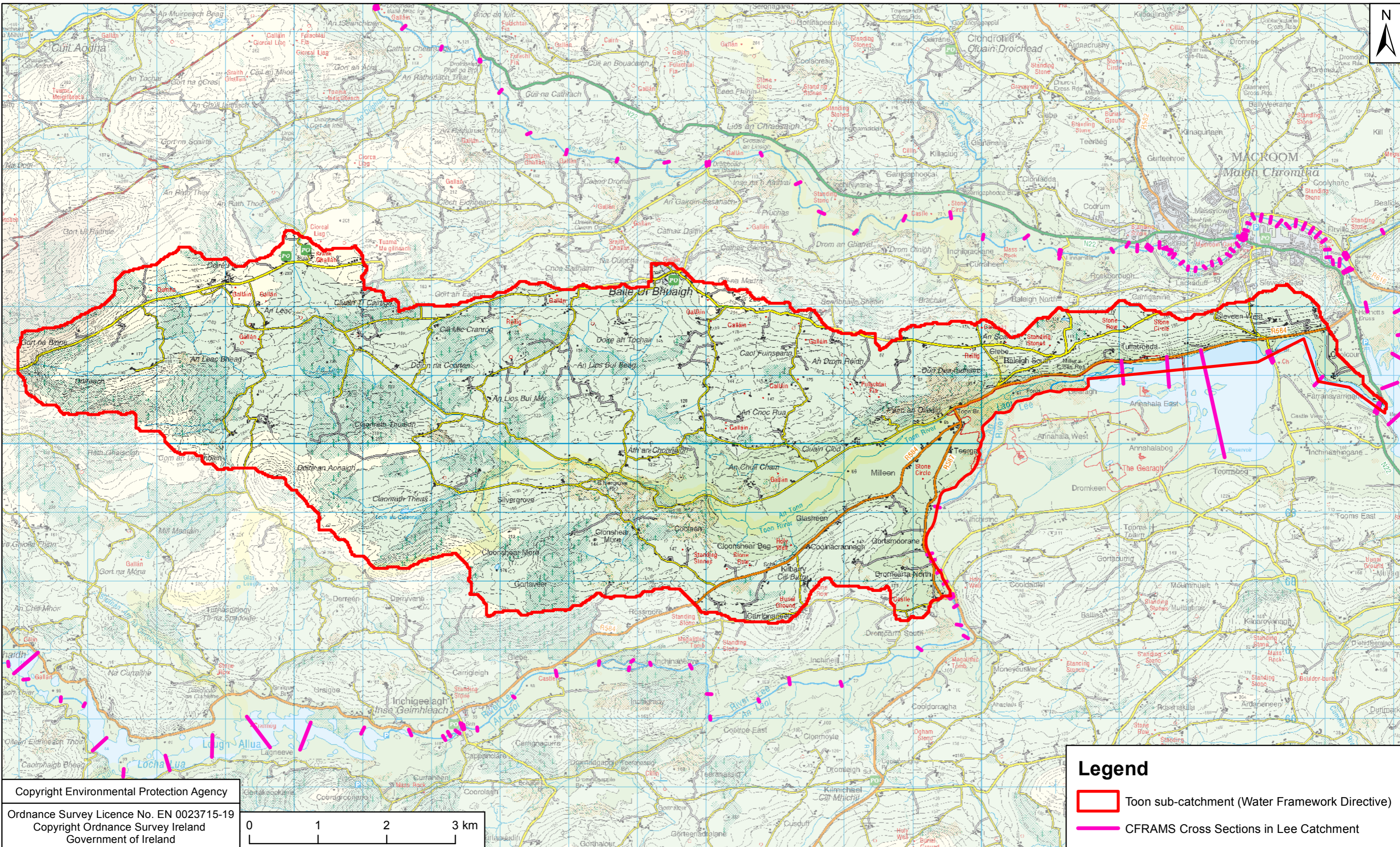
Project
 Gearagh Scoping Exercise

Title
 Toon sub-catchment - Status of Hydrometric Gauges

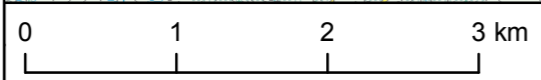
Production Unit
 Civil & Environmental Engineering

DRAWN BY T. O'Rourke	PRODUCED BY T. O'Rourke	VERIFIED BY G. Hamilton	APPROVED BY J. Fitzpatrick	REVISION 0	APPROVED DATE 11/11/2016
CLIENT REF. 00-00	NO. OF SHEETS 1/1	SHEET SIZE A3	SCALE 1:50,000	MAP REFERENCE QS-000223-01-022	

COPYRIGHT © ESB ENGINEERING & FACILITY MANAGEMENT LTD.
 All rights reserved. No part of this work may be modified or reproduced or copied in any form or by any means - graphics, electronic or mechanical, including photocopying, recording, taping or information-and-retrieval system, or used for any purpose than its designated purpose, without the written permission of ESB Engineering & Facility Management Ltd.



Copyright Environmental Protection Agency
 Ordnance Survey Licence No. EN 0023715-19
 Copyright Ordnance Survey Ireland
 Government of Ireland



Legend

- Toon sub-catchment (Water Framework Directive)
- CFRAMS Cross Sections in Lee Catchment

Rev	Revision Description	Date

ESB INTERNATIONAL
 ESB International, Stephen Court, 18-21 St. Stephen's Green,
 Dublin 2, Ireland Tel: +353 (0) 1 703 8000 Fax: +353 (0) 1 703 8088
 Email: marketing@esbi.ie Web: www.esbi.ie

Client
ESB Generation and Wholesale Markets

Title
CFRAMS Cross Sections in Lee Catchment

DRAWN BY T. O'Rourke	PRODUCED BY T. O'Rourke	VERIFIED BY G. Hamilton	APPROVED BY J. Fitzpatrick	REVISION 0	APPROVED DATE 11/11/2016
CLIENT REF. 00-00	NO. OF SHEETS 1/1	SHEET SIZE A3	SCALE 1:50,000		

COPYRIGHT © ESBI ENGINEERING & FACILITY MANAGEMENT LTD.
 All rights reserved. No part of this work may be modified or reproduced or copied in any form or by any means - graphics, electronic or mechanical, including photocopying, recording, taping or information-and-retrieval system, or used for any purpose than its designated purpose, without the written permission of ESBI Engineering & Facility Management Ltd.

ESB International, is a trading name of ESBI Engineering and Facility Management Ltd.
 Registered Office: as above, Registered in Ireland: No. 155249

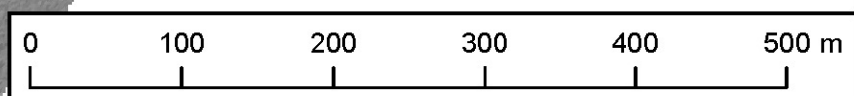
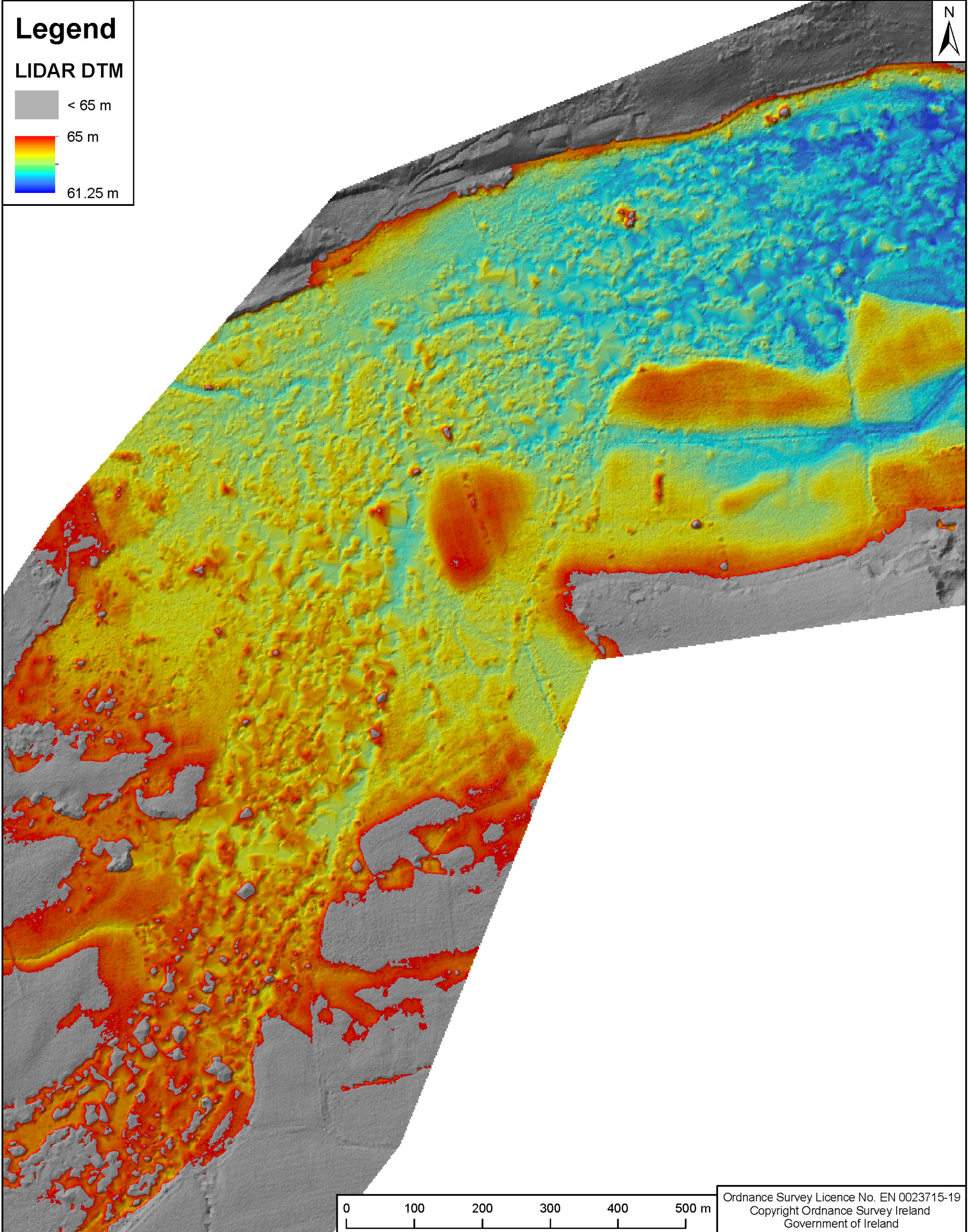
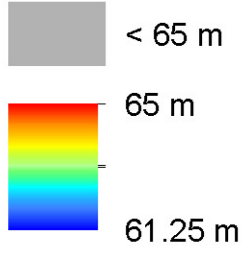
Project
Gearagh Scoping Exercise

Production Unit
Civil & Environmental Engineering

MAP REFERENCE
QS-000223-01-023

Legend

LIDAR DTM



Ordnance Survey Licence No. EN 0023715-19
 Copyright Ordnance Survey Ireland
 Government of Ireland

Rev	Revision Description	Date

COPYRIGHT ©
 ESB ENGINEERING & FACILITY MANAGEMENT Ltd.
 All rights reserved. No part of this work may be modified or reproduced or copied in any form or by any means - graphics, electronic or mechanical, including photocopying, recording, taping or information-and-retrieval system, or used for any purpose than its designated purpose, without the written permission of ESB Engineering & Facility Management Ltd.



ESB International, Stephen Court, 18-21 St. Stephen's Green, Dublin 2, Ireland
 Tel: +353 (0) 1 703 8000 Fax: +353 (0) 1 703 8088
 Email: marketing@esbi.ie Web: www.esbi.ie
 ESB International, is a trading name of ESB Engineering and Facility Management Ltd.
 Registered Office: as above, Registered in Ireland: No. 155249

Title 2006 LIDAR DTM		DRAWN BY T.O'R	VERIFIED BY G.H.	APPROVED BY J.F.	APPROVED DATE 18/01/2017
Project Gearagh Scoping Exercise		CLIENT REF. 00-00	NO. OF SHEETS 01/01	SHEET SIZE A3	SCALE 1: 5,000
Client ESB Generation and Wholesale Markets	Production Unit Civil & Environmental Engineering	MAP REFERENCE QS-000223-01-024			