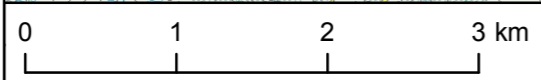


Legend

- Toon sub-catchment (Water Framework Directive)
- 211 Non-irrigated arable land
- 231 Pastures
- 243 Land principally occupied by agriculture with areas of natural vegetation
- 311 Broad Leaved forest
- 312 Coniferous forest
- 313 Mixed forest
- 324 Transitional woodland scrub
- 412 Peat bogs
- 511 Stream courses
- 512 Water bodies

Copyright Environmental Protection Agency
 Ordnance Survey Licence No. EN 0023715-19
 Copyright Ordnance Survey Ireland
 Government of Ireland



Rev	Revision Description	Date

ESB INTERNATIONAL
 ESB International, Stephen Court, 18-21 St. Stephen's Green,
 Dublin 2, Ireland Tel: +353 (0) 1 703 8000 Fax: +353 (0) 1 703 8088
 Email: marketing@esbi.ie Web: www.esbi.ie

ESB International, is a trading name of ESB Engineering and Facility Management Ltd.
 Registered Office: as above, Registered in Ireland: No. 155249

Client
ESB Generation and Wholesale Markets

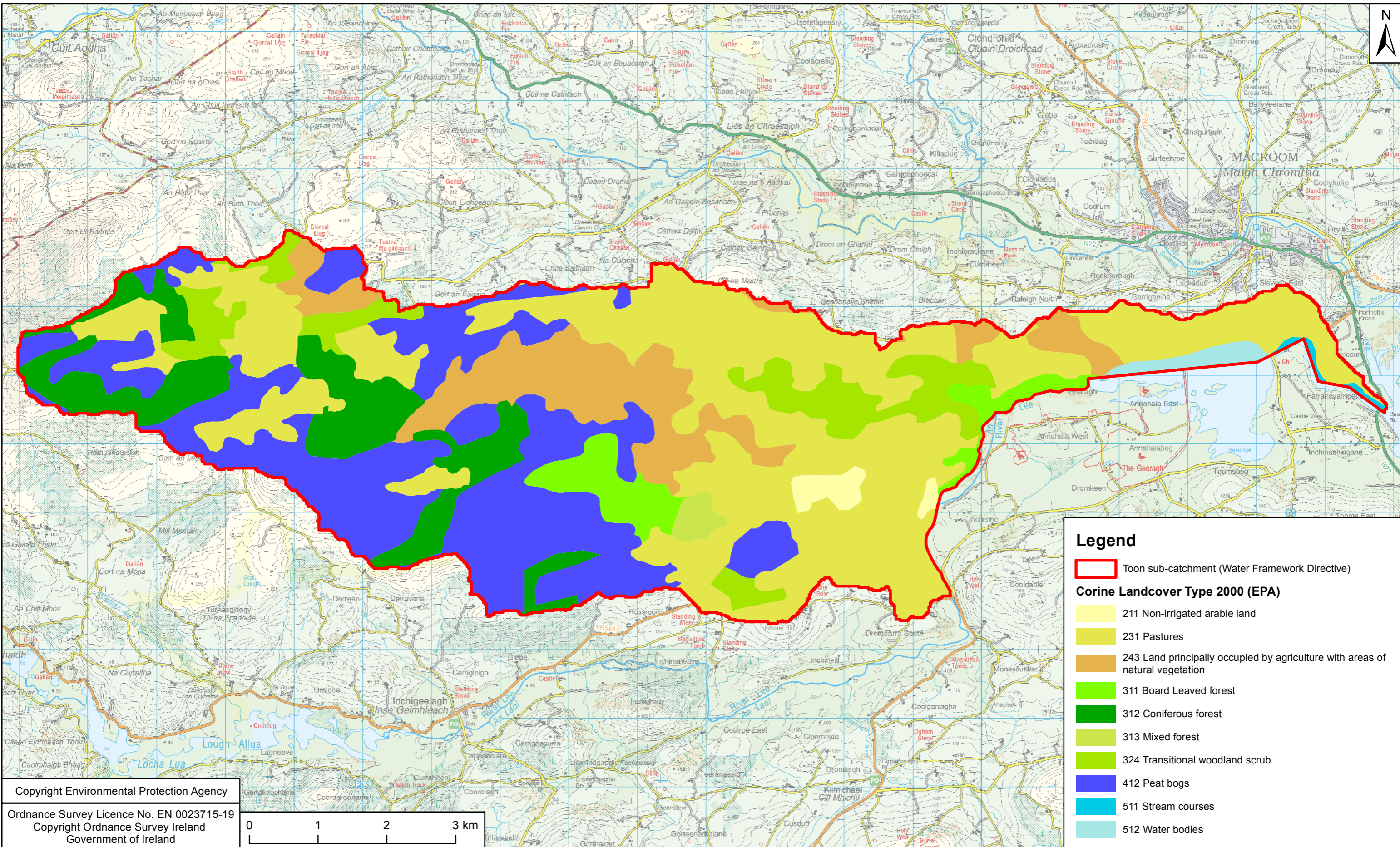
Project
Gearagh Scoping Exercise

Title
**Corine Land Cover Type 1990
 Toon sub-catchment**

Production Unit
Civil & Environmental Engineering

DRAWN BY T. O'Rourke	PRODUCED BY T. O'Rourke	VERIFIED BY G. Hamilton	APPROVED BY J. Fitzpatrick	REVISION 0	APPROVED DATE 11/11/2016
CLIENT REF. 00-00	NO. OF SHEETS 1/1	SHEET SIZE A3	SCALE 1:50,000	MAP REFERENCE QS-000223-01-013	

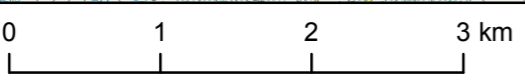
COPYRIGHT © ESB ENGINEERING & FACILITY MANAGEMENT LTD.
 All rights reserved. No part of this work may be modified or reproduced or copied in any form or by any means - graphics, electronic or mechanical, including photocopying, recording, taping or information-and-retrieval system, or used for any purpose than its designated purpose, without the written permission of ESB Engineering & Facility Management Ltd.



Legend

- Toon sub-catchment (Water Framework Directive)
- Corine Landcover Type 2000 (EPA)**
- 211 Non-irrigated arable land
- 231 Pastures
- 243 Land principally occupied by agriculture with areas of natural vegetation
- 311 Broad Leaved forest
- 312 Coniferous forest
- 313 Mixed forest
- 324 Transitional woodland scrub
- 412 Peat bogs
- 511 Stream courses
- 512 Water bodies

Copyright Environmental Protection Agency
 Ordnance Survey Licence No. EN 0023715-19
 Copyright Ordnance Survey Ireland
 Government of Ireland



Rev	Revision Description	Date

ESB INTERNATIONAL

ESB International, Stephen Court, 18-21 St. Stephen's Green, Dublin 2, Ireland Tel: +353 (0) 1 703 8000 Fax: +353 (0) 1 703 8088 Email: marketing@esbi.ie Web: www.esbi.ie

ESB International, is a trading name of ESB Engineering and Facility Management Ltd. Registered Office: as above, Registered in Ireland: No. 155249

Client
ESB Generation and Wholesale Markets

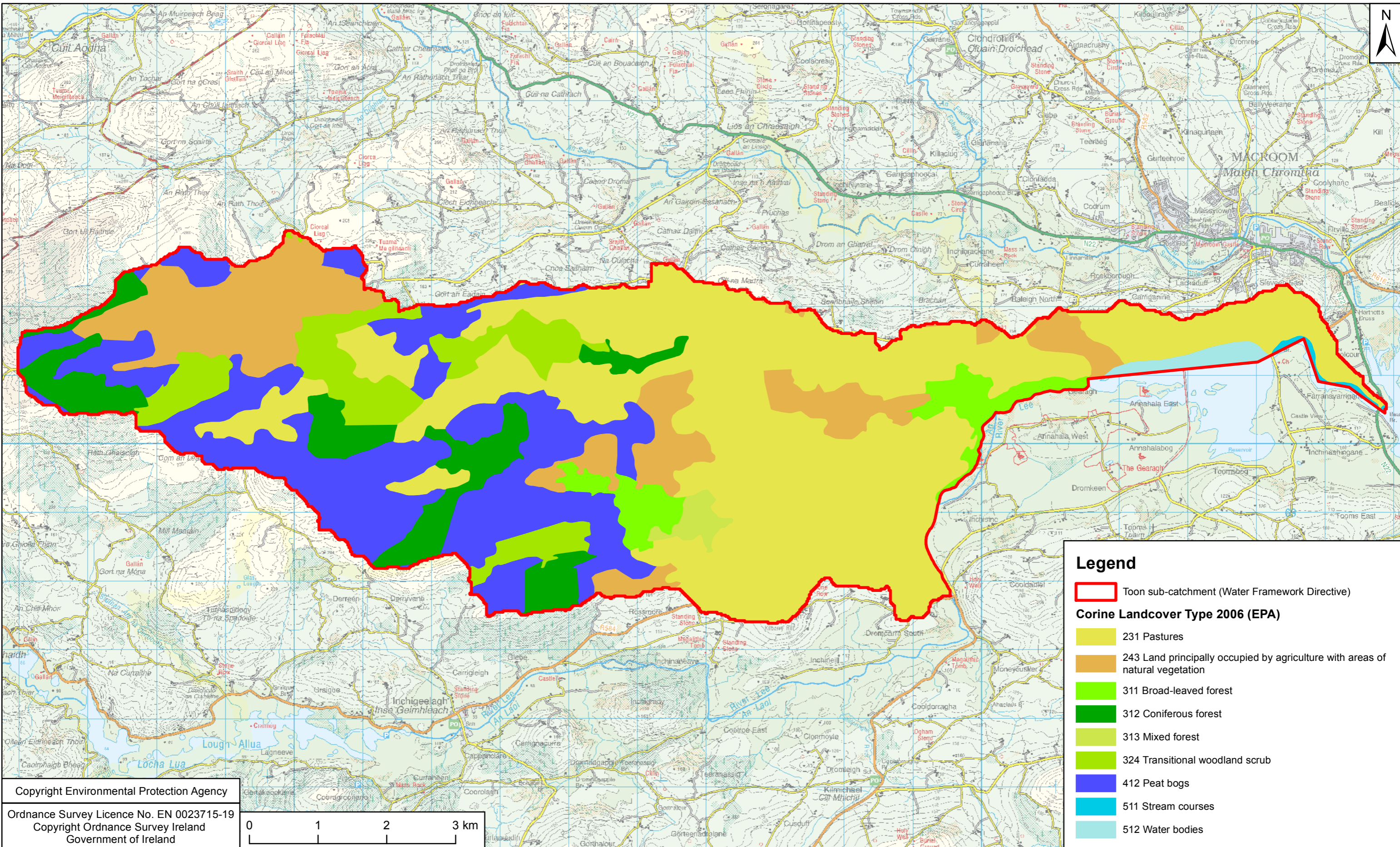
Project
Gearagh Scoping Exercise

Title
Corine Land Cover Type 2000 Toon sub-catchment

Production Unit
Civil & Environmental Engineering

DRAWN BY T. O'Rourke	PRODUCED BY T. O'Rourke	VERIFIED BY G. Hamilton	APPROVED BY J. Fitzpatrick	REVISION 0	APPROVED DATE 11/11/2016
CLIENT REF. 00-00	NO. OF SHEETS 1/1	SHEET SIZE A3	SCALE 1:50,000	MAP REFERENCE QS-000223-01-014	

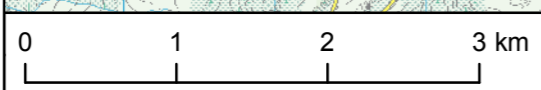
COPYRIGHT © ESBI ENGINEERING & FACILITY MANAGEMENT LTD. All rights reserved. No part of this work may be modified or reproduced or copied in any form or by any means - graphics, electronic or mechanical, including photocopying, recording, taping or information-and-retrieval system, or used for any purpose than its designated purpose, without the written permission of ESBI Engineering & Facility Management Ltd.



Legend

- Toon sub-catchment (Water Framework Directive)
- Corine Landcover Type 2006 (EPA)**
- 231 Pastures
- 243 Land principally occupied by agriculture with areas of natural vegetation
- 311 Broad-leaved forest
- 312 Coniferous forest
- 313 Mixed forest
- 324 Transitional woodland scrub
- 412 Peat bogs
- 511 Stream courses
- 512 Water bodies

Copyright Environmental Protection Agency
 Ordnance Survey Licence No. EN 0023715-19
 Copyright Ordnance Survey Ireland
 Government of Ireland



Rev	Revision Description	Date

COPYRIGHT © ESBI ENGINEERING & FACILITY MANAGEMENT LTD.
 All rights reserved. No part of this work may be modified or reproduced or copied in any form or by any means - graphics, electronic or mechanical, including photocopying, recording, taping or information-and-retrieval system, or used for any purpose than its designated purpose, without the written permission of ESBI Engineering & Facility Management Ltd.

ESB INTERNATIONAL

ESB International, Stephen Court, 18-21 St. Stephen's Green, Dublin 2, Ireland Tel: +353 (0) 1 703 8000 Fax: +353 (0) 1 703 8088 Email: marketing@esbi.ie Web: www.esbi.ie

ESB International, is a trading name of ESBI Engineering and Facility Management Ltd. Registered Office: as above, Registered in Ireland: No. 155249

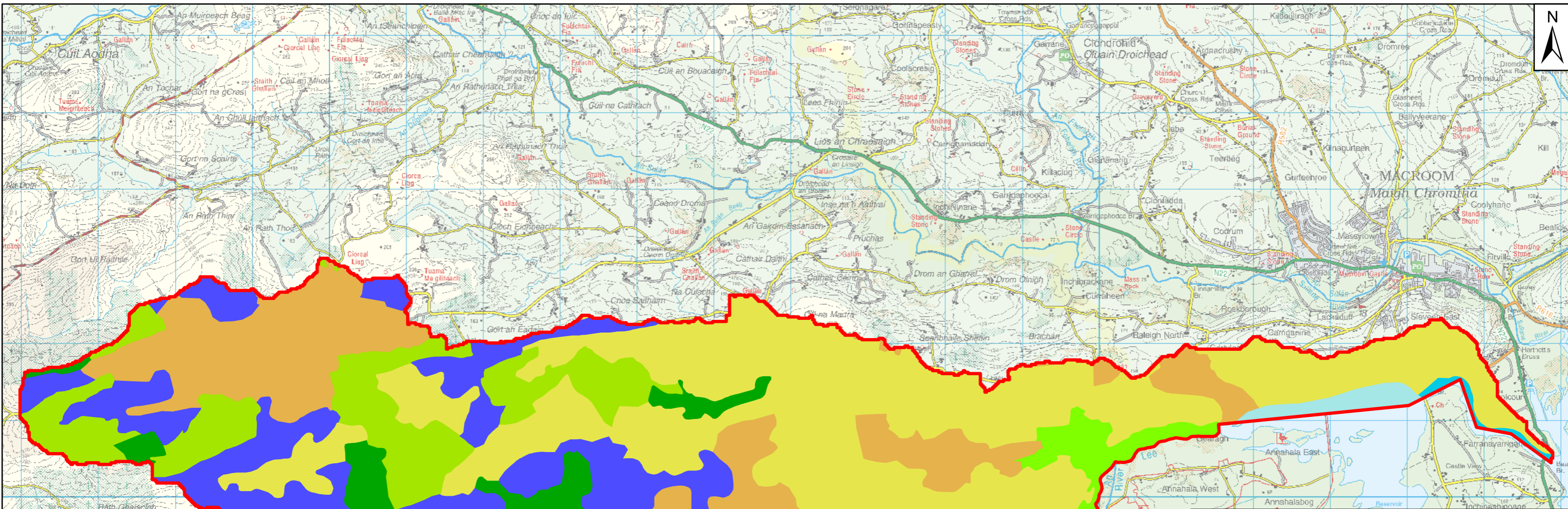
Client
 ESB Generation and Wholesale Markets

Project
 Gearagh Scoping Exercise

Title
 Corine Land Cover Type 2006
 Toon sub-catchment

Production Unit
 Civil & Environmental Engineering

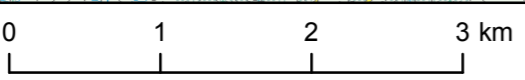
DRAWN BY T. O'Rourke	PRODUCED BY T. O'Rourke	VERIFIED BY G. Hamilton	APPROVED BY J. Fitzpatrick	REVISION 0	APPROVED DATE 11/11/2016
CLIENT REF. 00-00	NO. OF SHEETS 1/1	SHEET SIZE A3	SCALE 1:50,000	MAP REFERENCE QS-000223-01-015	



Legend

- Toon sub-catchment (Water Framework Directive)
- 211 Non-irrigated land
- 231 Pastures
- 243 Land principally occupied by agriculture with areas of natural vegetation
- 311 Broad-leaved forest
- 312 Coniferous forest
- 313 Mixed forest
- 324 Transitional woodland scrub
- 412 Peat bogs
- 511 Stream courses
- 512 Water bodies

Copyright Environmental Protection Agency
 Ordnance Survey Licence No. EN 0023715-19
 Copyright Ordnance Survey Ireland
 Government of Ireland



Rev	Revision Description	Date

ESB INTERNATIONAL
 ESB International, Stephen Court, 18-21 St. Stephen's Green,
 Dublin 2, Ireland Tel: +353 (0) 1 703 8000 Fax: +353 (0) 1 703 8088
 Email: marketing@esbi.ie Web: www.esbi.ie

Client
ESB Generation and Wholesale Markets

Title
**Corine Land Cover Type 2012
 Toon sub-catchment**

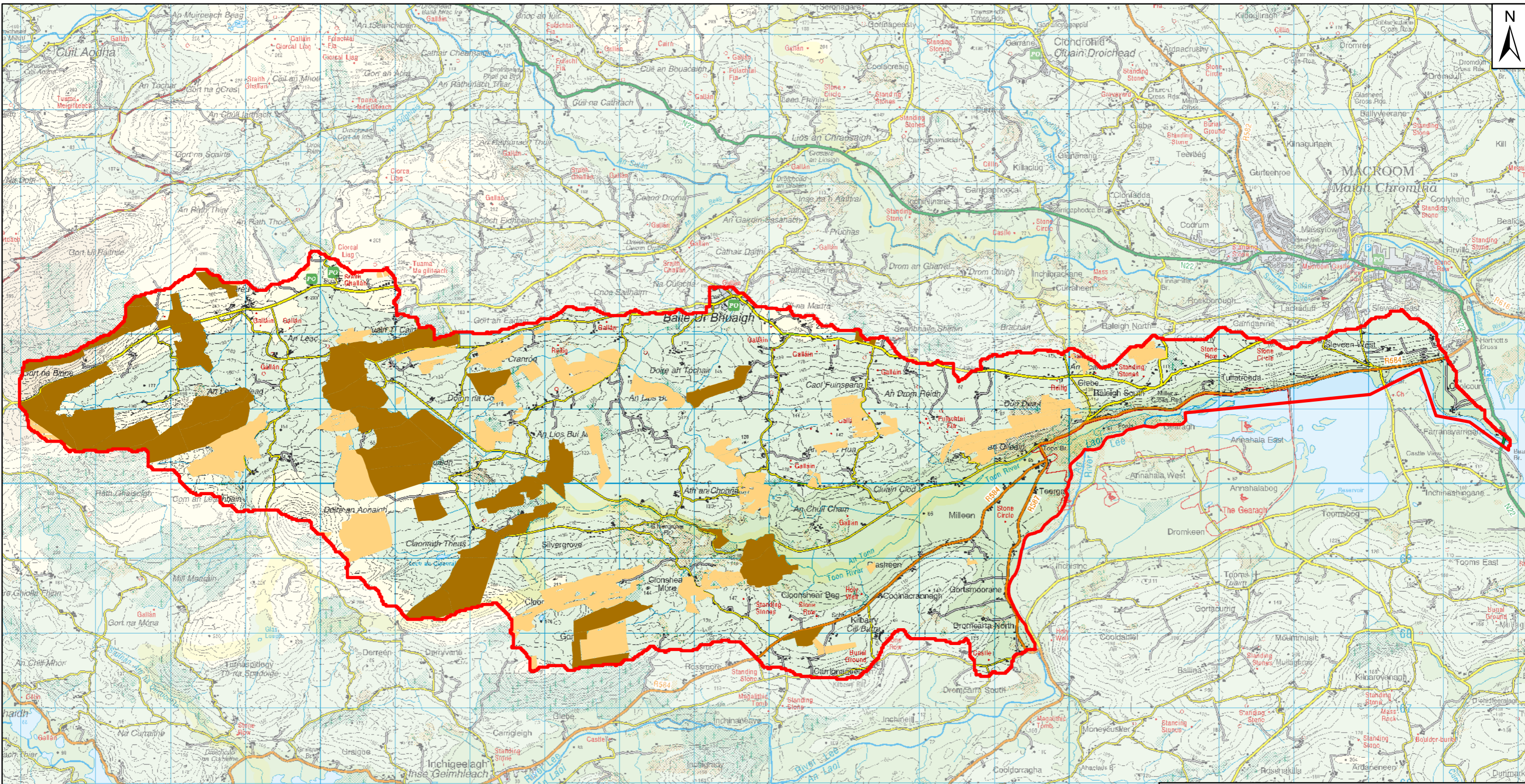
Project
Gearagh Scoping Exercise

Production Unit
Civil & Environmental Engineering

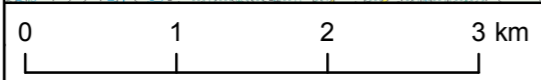
DRAWN BY T. O'Rourke	PRODUCED BY T. O'Rourke	VERIFIED BY G. Hamilton	APPROVED BY J. Fitzpatrick	REVISION 0	APPROVED DATE 11/11/2016
CLIENT REF. 00-00	NO. OF SHEETS 1/1	SHEET SIZE A3	SCALE 1:50,000	MAP REFERENCE QS-000223-01-016	

COPYRIGHT © ESBI ENGINEERING & FACILITY MANAGEMENT LTD.
 All rights reserved. No part of this work may be modified or reproduced or copied in any form or by any means - graphics, electronic or mechanical, including photocopying, recording, taping or information-and-retrieval system, or used for any purpose than its designated purpose, without the written permission of ESBI Engineering & Facility Management Ltd.

ESB International, is a trading name of ESBI Engineering and Facility Management Ltd.
 Registered Office: as above, Registered in Ireland: No. 155249



Copyright Coillte
 Copyright Department of Agriculture, Food and the Marine
 Ordnance Survey Licence No. EN 0023715-19
 Copyright Ordnance Survey Ireland
 Government of Ireland



Legend

- Toon sub-catchment (Water Framework Directive)
- Coillte Properties
- Commercial Forestry

Rev	Revision Description	Date

ESB INTERNATIONAL
 ESB International, Stephen Court, 18-21 St. Stephen's Green,
 Dublin 2, Ireland Tel: +353 (0) 1 703 8000 Fax: +353 (0) 1 703 8088
 Email: marketing@esbi.ie Web: www.esbi.ie

Client
ESB Generation and Wholesale Markets

Title
Toon sub-catchment - Commercial Forestry

DRAWN BY T. O'Rourke	PRODUCED BY T. O'Rourke	VERIFIED BY G. Hamilton	APPROVED BY J. Fitzpatrick	REVISION 0	APPROVED DATE 11/11/2016
CLIENT REF. 00-00	NO. OF SHEETS 1/1	SHEET SIZE A3	SCALE 1:50,000		

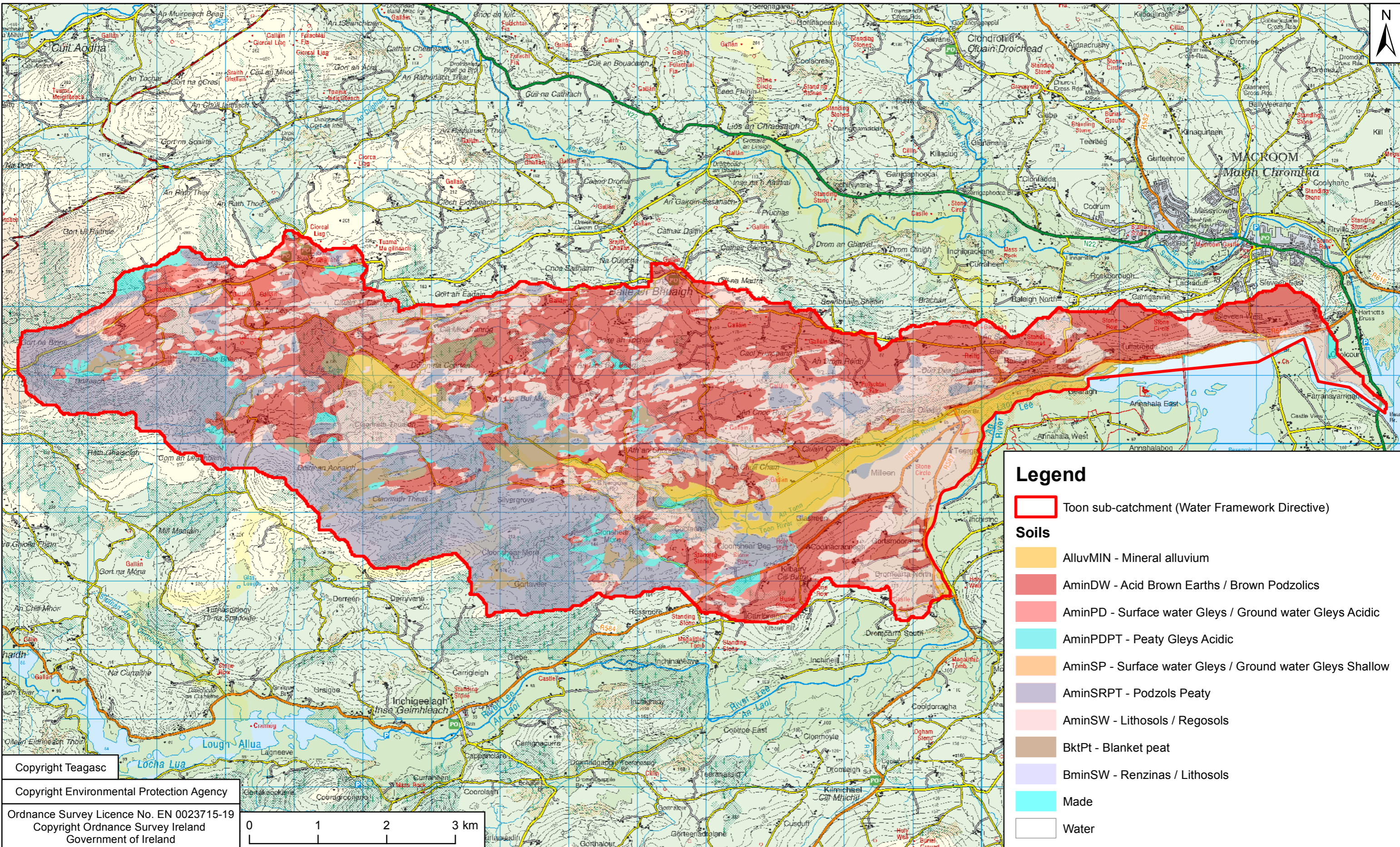
COPYRIGHT © ESBI ENGINEERING & FACILITY MANAGEMENT LTD.
 All rights reserved. No part of this work may be modified or reproduced or copied in any form or by any means - graphics, electronic or mechanical, including photocopying, recording, taping or information-and-retrieval system, or used for any purpose than its designated purpose, without the written permission of ESBI Engineering & Facility Management Ltd.

ESB International, is a trading name of ESBI Engineering and Facility Management Ltd.
 Registered Office: as above, Registered in Ireland: No. 155249

Project
Gearagh Scoping Exercise

Production Unit
Civil & Environmental Engineering

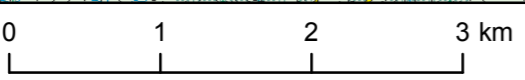
MAP REFERENCE
QS-000223-01-017



Legend

- Toon sub-catchment (Water Framework Directive)
- Soils**
- AlluvMIN - Mineral alluvium
- AminDW - Acid Brown Earths / Brown Podzolics
- AminPD - Surface water Gleys / Ground water Gleys Acidic
- AminPDPT - Peaty Gleys Acidic
- AminSP - Surface water Gleys / Ground water Gleys Shallow
- AminSRPT - Podzols Peaty
- AminSW - Lithosols / Regosols
- BktPt - Blanket peat
- BminSW - Renzinas / Lithosols
- Made
- Water

Copyright Teagasc
 Copyright Environmental Protection Agency
 Ordnance Survey Licence No. EN 0023715-19
 Copyright Ordnance Survey Ireland
 Government of Ireland



Rev	Revision Description	Date

COPYRIGHT © ESBI ENGINEERING & FACILITY MANAGEMENT LTD.
 All rights reserved. No part of this work may be modified or reproduced or copied in any form or by any means - graphics, electronic or mechanical, including photocopying, recording, taping or information-and-retrieval system, or used for any purpose than its designated purpose, without the written permission of ESBI Engineering & Facility Management Ltd.

ESB INTERNATIONAL

ESB International, Stephen Court, 18-21 St. Stephen's Green, Dublin 2, Ireland Tel: +353 (0) 1 703 8000 Fax: +353 (0) 1 703 8088 Email: marketing@esbi.ie Web: www.esbi.ie

ESB International, is a trading name of ESBI Engineering and Facility Management Ltd. Registered Office: as above, Registered in Ireland: No. 155249

Client
 ESB Generation and Wholesale Markets

Project
 Gearagh Scoping Exercise

Title
 Toon sub-catchment - Soils

Production Unit
 Civil & Environmental Engineering

DRAWN BY T. O'Rourke	PRODUCED BY T. O'Rourke	VERIFIED BY G. Hamilton	APPROVED BY J. Fitzpatrick	REVISION 0	APPROVED DATE 11/11/2016
CLIENT REF. 00-00	NO. OF SHEETS 1/1	SHEET SIZE A3	SCALE 1:50,000	MAP REFERENCE QS-000223-01-018	