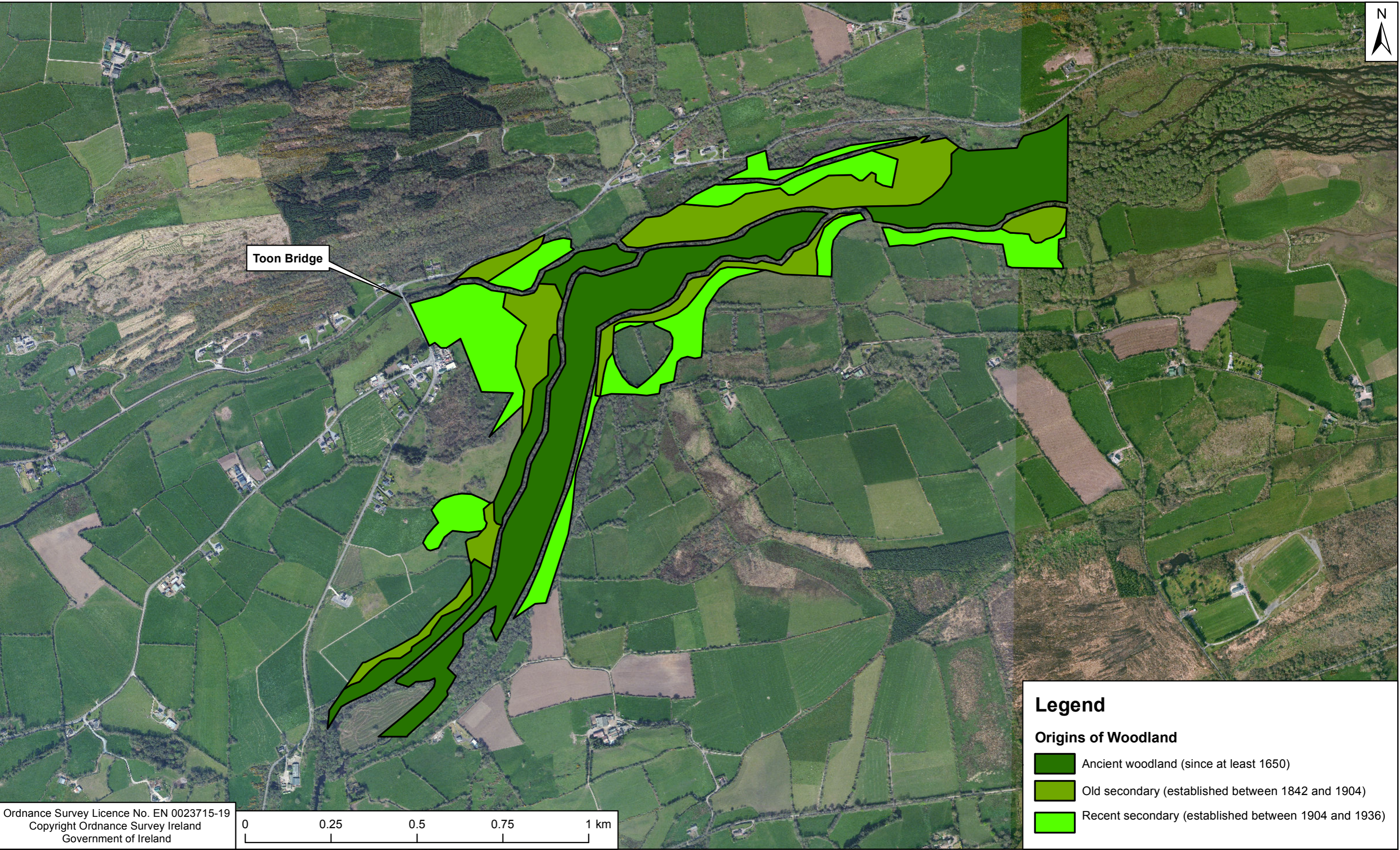
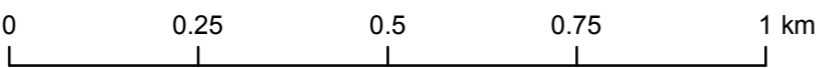




Toon Bridge






Ordnance Survey Licence No. EN 0023715-19
Copyright Ordnance Survey Ireland
Government of Ireland



Legend

Origins of Woodland

-  Ancient woodland (since at least 1650)
-  Old secondary (established between 1842 and 1904)
-  Recent secondary (established between 1904 and 1936)

DRAWN BY	PRODUCED BY	VERIFIED BY	APPROVED BY	REVISION	APPROVED DATE
T. O'Rourke	T. O'Rourke	G. Hamilton	J. Fitzpatrick	0	11/11/2016
CLIENT REF.	NO. OF SHEETS	SHEET SIZE	SCALE		
00-00	1/1	A3	1:10,000		
MAP REFERENCE					
QS-000223-01-007					

Rev	Revision Description	Date



ESB INTERNATIONAL

ESB International, Stephen Court, 18-21 St. Stephen's Green,
Dublin 2, Ireland Tel: +353 (0) 1 703 8000 Fax: +353 (0) 1 703 8088
Email: marketing@esbi.ie Web: www.esbi.ie




ESB International, is a trading name of ESBI Engineering and Facility Management Ltd.
Registered Office: as above, Registered in Ireland: No. 155249

Client
ESB Generation and Wholesale Markets

Project
Gearagh Scoping Exercise

Title
Origins of Woodland

Production Unit
Civil & Environmental Engineering

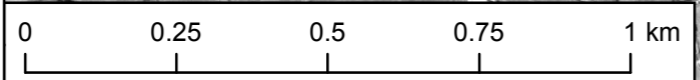
DRAWN BY	PRODUCED BY	VERIFIED BY	APPROVED BY	REVISION	APPROVED DATE
T. O'Rourke	T. O'Rourke	G. Hamilton	J. Fitzpatrick	0	11/11/2016
CLIENT REF.	NO. OF SHEETS	SHEET SIZE	SCALE		
00-00	1/1	A3	1:10,000		
MAP REFERENCE					
QS-000223-01-007					

COPYRIGHT © ESBI ENGINEERING & FACILITY MANAGEMENT LTD.
All rights reserved. No part of this work may be modified or reproduced or copied in any form or by any means - graphics, electronic or mechanical, including photocopying, recording, taping or information-and-retrieval system, or used for any purpose than its designated purpose, without the written permission of ESBI Engineering & Facility Management Ltd.



Toon Bridge

Ordnance Survey Licence No. EN 0023715-19
 Copyright Ordnance Survey Ireland
 Government of Ireland



Rev	Revision Description	Date

ESB INTERNATIONAL
 ESB International, Stephen Court, 18-21 St. Stephen's Green,
 Dublin 2, Ireland Tel: +353 (0) 1 703 8000 Fax: +353 (0) 1 703 8088
 Email: marketing@esbi.ie Web: www.esbi.ie

Client
ESB Generation and Wholesale Markets

Title
OSi 1974 Aerial Imagery

Project
Gearagh Scoping Exercise

Production Unit
Civil & Environmental Engineering

DRAWN BY T. O'Rourke	PRODUCED BY T. O'Rourke	VERIFIED BY G. Hamilton	APPROVED BY J. Fitzpatrick	REVISION 0	APPROVED DATE 11/11/2016
CLIENT REF. 00-00	NO. OF SHEETS 1/1	SHEET SIZE A3	SCALE 1:12,500		
MAP REFERENCE QS-000223-01-008					

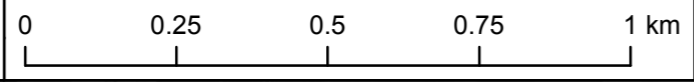
COPYRIGHT © ESBI ENGINEERING & FACILITY MANAGEMENT LTD.
 All rights reserved. No part of this work may be modified or reproduced or copied in any form or by any means - graphics, electronic or mechanical, including photocopying, recording, taping or information-and-retrieval system, or used for any purpose than its designated purpose, without the written permission of ESBI Engineering & Facility Management Ltd.

ESB International, is a trading name of ESBI Engineering and Facility Management Ltd.
 Registered Office: as above, Registered in Ireland: No. 155249



Toon Bridge

Ordnance Survey Licence No. EN 0023715-19
 Copyright Ordnance Survey Ireland
 Government of Ireland



Rev	Revision Description	Date

COPYRIGHT © ESBI ENGINEERING & FACILITY MANAGEMENT Ltd.
 All rights reserved. No part of this work may be modified or reproduced or copied in any form or by any means - graphics, electronic or mechanical, including photocopying, recording, taping or information-and-retrieval system, or used for any purpose than its designated purpose, without the written permission of ESBI Engineering & Facility Management Ltd.

ESB International, Stephen Court, 18-21 St. Stephen's Green,
 Dublin 2, Ireland Tel: +353 (0) 1 703 8000 Fax: +353 (0) 1 703 8088
 Email: marketing@esbi.ie Web: www.esbi.ie

ESB International, is a trading name of ESBI Engineering and Facility Management Ltd.
 Registered Office: as above, Registered in Ireland: No. 155249

Client
ESB Generation and Wholesale Markets

Project
Gearagh Scoping Exercise

Title
OSi 1995 Orthophotography

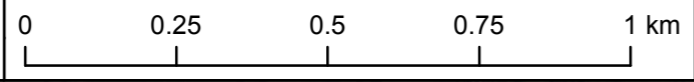
Production Unit
Civil & Environmental Engineering

DRAWN BY T. O'Rourke	PRODUCED BY T. O'Rourke	VERIFIED BY G. Hamilton	APPROVED BY J. Fitzpatrick	REVISION 0	APPROVED DATE 11/11/2016
CLIENT REF. 00-00		NO. OF SHEETS 1/1	SHEET SIZE A3	SCALE 1:12,500	
MAP REFERENCE			QS-000223-01-009		



Toon Bridge

Ordnance Survey Licence No. EN 0023715-19
 Copyright Ordnance Survey Ireland
 Government of Ireland



Rev	Revision Description	Date

ESB INTERNATIONAL
 ESB International, Stephen Court, 18-21 St. Stephen's Green,
 Dublin 2, Ireland Tel: +353 (0) 1 703 8000 Fax: +353 (0) 1 703 8088
 Email: marketing@esbi.ie Web: www.esbi.ie

Client
ESB Generation and Wholesale Markets

Title
OSi 2000 Orthophotography

Project
Gearagh Scoping Exercise

Production Unit
Civil & Environmental Engineering

DRAWN BY T. O'Rourke	PRODUCED BY T. O'Rourke	VERIFIED BY G. Hamilton	APPROVED BY J. Fitzpatrick	REVISION 0	APPROVED DATE 11/11/2016
CLIENT REF. 00-00	NO. OF SHEETS 1/1	SHEET SIZE A3	SCALE 1:12,500		
MAP REFERENCE QS-000223-01-010					

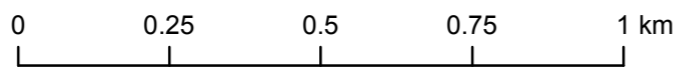
COPYRIGHT © ESBI ENGINEERING & FACILITY MANAGEMENT LTD.
 All rights reserved. No part of this work may be modified or reproduced or copied in any form or by any means - graphics, electronic or mechanical, including photocopying, recording, taping or information-and-retrieval system, or used for any purpose than its designated purpose, without the written permission of ESBI Engineering & Facility Management Ltd.

ESB International, is a trading name of ESBI Engineering and Facility Management Ltd.
 Registered Office: as above, Registered in Ireland: No. 155249



Toon Bridge

Ordnance Survey Licence No. EN 0023715-19
 Copyright Ordnance Survey Ireland
 Government of Ireland



Rev	Revision Description	Date

ESB INTERNATIONAL
 ESB International, Stephen Court, 18-21 St. Stephen's Green,
 Dublin 2, Ireland Tel: +353 (0) 1 703 8000 Fax: +353 (0) 1 703 8088
 Email: marketing@esbi.ie Web: www.esbi.ie
 ESB International, is a trading name of ESB Engineering and Facility Management Ltd.
 Registered Office: as above, Registered in Ireland: No. 155249

Client
ESB Generation and Wholesale Markets

Project
Gearagh Scoping Exercise

Title
OSi 2005 Orthophotography

Production Unit
Civil & Environmental Engineering

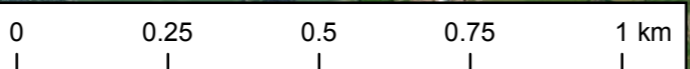
DRAWN BY T. O'Rourke	PRODUCED BY T. O'Rourke	VERIFIED BY G. Hamilton	APPROVED BY J. Fitzpatrick	REVISION 0	APPROVED DATE 11/11/2016
CLIENT REF. 00-00	NO. OF SHEETS 1/1	SHEET SIZE A3	SCALE 1:12,500		
MAP REFERENCE QS-000223-01-011					

COPYRIGHT © ESB ENGINEERING & FACILITY MANAGEMENT LTD.
 All rights reserved. No part of this work may be modified or reproduced or copied in any form or by any means - graphics, electronic or mechanical, including photocopying, recording, taping or information-and-retrieval system, or used for any purpose than its designated purpose, without the written permission of ESB Engineering & Facility Management Ltd.



Toon Bridge

Imagery Source: Source: Esri, DigitalGlobe, GeoEye, Earthstar Geographics, CNES/Airbus DS, USDA, USGS, AeroGRID, IGN, and the GIS User Community



Rev	Revision Description	Date

ESB INTERNATIONAL
 ESB International, Stephen Court, 18-21 St. Stephen's Green, Dublin 2, Ireland
 Tel: +353 (0) 1 703 8000 Fax: +353 (0) 1 703 8088
 Email: marketing@esbi.ie Web: www.esbi.ie

Client
ESB Generation and Wholesale Markets

Title
Digital Globe Aerial Imagery 2012

Project
Gearagh Scoping Exercise

Production Unit
Civil & Environmental Engineering

DRAWN BY T. O'Rourke	PRODUCED BY T. O'Rourke	VERIFIED BY G. Hamilton	APPROVED BY J. Fitzpatrick	REVISION 0	APPROVED DATE 11/11/2016
CLIENT REF. 00-00	NO. OF SHEETS 1/1	SHEET SIZE A3	SCALE 1:12,500		
MAP REFERENCE QS-000223-01-012					

COPYRIGHT © ESBI ENGINEERING & FACILITY MANAGEMENT LTD.
 All rights reserved. No part of this work may be modified or reproduced or copied in any form or by any means - graphics, electronic or mechanical, including photocopying, recording, taping or information-and-retrieval system, or used for any purpose than its designated purpose, without the written permission of ESBI Engineering & Facility Management Ltd.

ESB International, is a trading name of ESBI Engineering and Facility Management Ltd.
 Registered Office: as above, Registered in Ireland: No. 155249