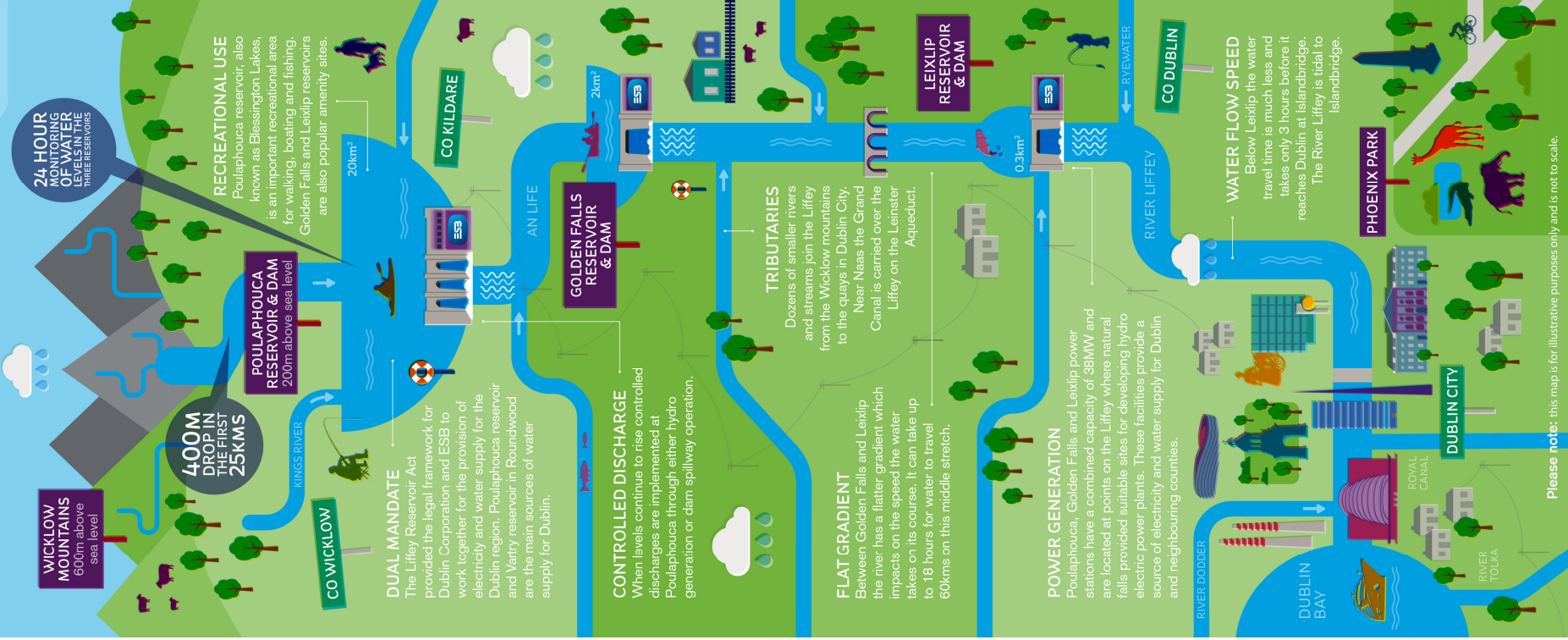




THE RIVER LIFFEY AN LIFE

The River Liffey rises in the Wicklow Mountains near the Sally Gap at a height of 600 metres and at a distance of only 25kms from Dublin City Centre. It drains an area of 1,300km² and flows for 125kms through Wicklow, Kildare and Dublin until it reaches the sea in Dublin Bay.



WICKLOW MOUNTAINS
600m above sea level

400M DROP IN THE FIRST 25KMS

24-HOUR MONITORING OF WATER LEVELS IN THE THREE RESERVOIRS

RECREATIONAL USE
Poulaphuca reservoir, also known as Blessington Lakes, is an important recreational area for walking, boating and fishing. Golden Falls and Leixlip reservoirs are also popular amenity sites.

DUAL MANDATE
The Liffey Reservoir Act provided the legal framework for Dublin Corporation and ESB to work together for the provision of electricity and water supply for the Dublin region. Poulaphuca reservoir and Ventry reservoir in Roundwood are the main sources of water supply for Dublin.

CONTROLLED DISCHARGE
When levels continue to rise controlled discharges are implemented at Poulaphuca through either hydro generation or dam spillway operation.

TRIBUTARIES
Dozens of smaller rivers and streams join the Liffey from the Wicklow mountains to the quays in Dublin City. Near Naas the Grand Canal is carried over the Liffey on the Leinster Aqueduct.

FLAT GRADIENT
Between Golden Falls and Leixlip the river has a flatter gradient which impacts on the speed the water takes on its course. It can take up to 18 hours for water to travel 60kms on this middle stretch.

POWER GENERATION
Poulaphuca, Golden Falls and Leixlip power stations have a combined capacity of 88MW and are located at points on the Liffey where natural falls provided suitable sites for developing hydro electric power plants. These facilities provide a source of electricity and water supply for Dublin and neighbouring counties.

WATER FLOW SPEED
Below Leixlip the water travel time is much less and takes only 3 hours before it reaches Dublin at Islandbridge. The River Liffey is tidal to Islandbridge.

Please note: this map is for illustrative purposes only and is not to scale.